

Investment into Leeds water network



Introductions

South East Water / Clancy Project Team

Jeremy Dufour

– Project Manager

Chris Love

– Delivery Manager

Dave Fellows

– Clancy Operations
Manager

Tracey Reid

– Communications
Officer

Jo Shippey

– Community Engagement
Manager

Representatives from KCC

Barbara Westmacott

– Streetworks Manager

Richard Emmet

– Senior Highway Manager

Andrew Loosemore

– Head of Highways

Haroona Chughtai

– Director of Highways

David Brazier

– County Member for Sevenoaks Rural North East
– Cabinet Member for Highways & Transport

Project recap

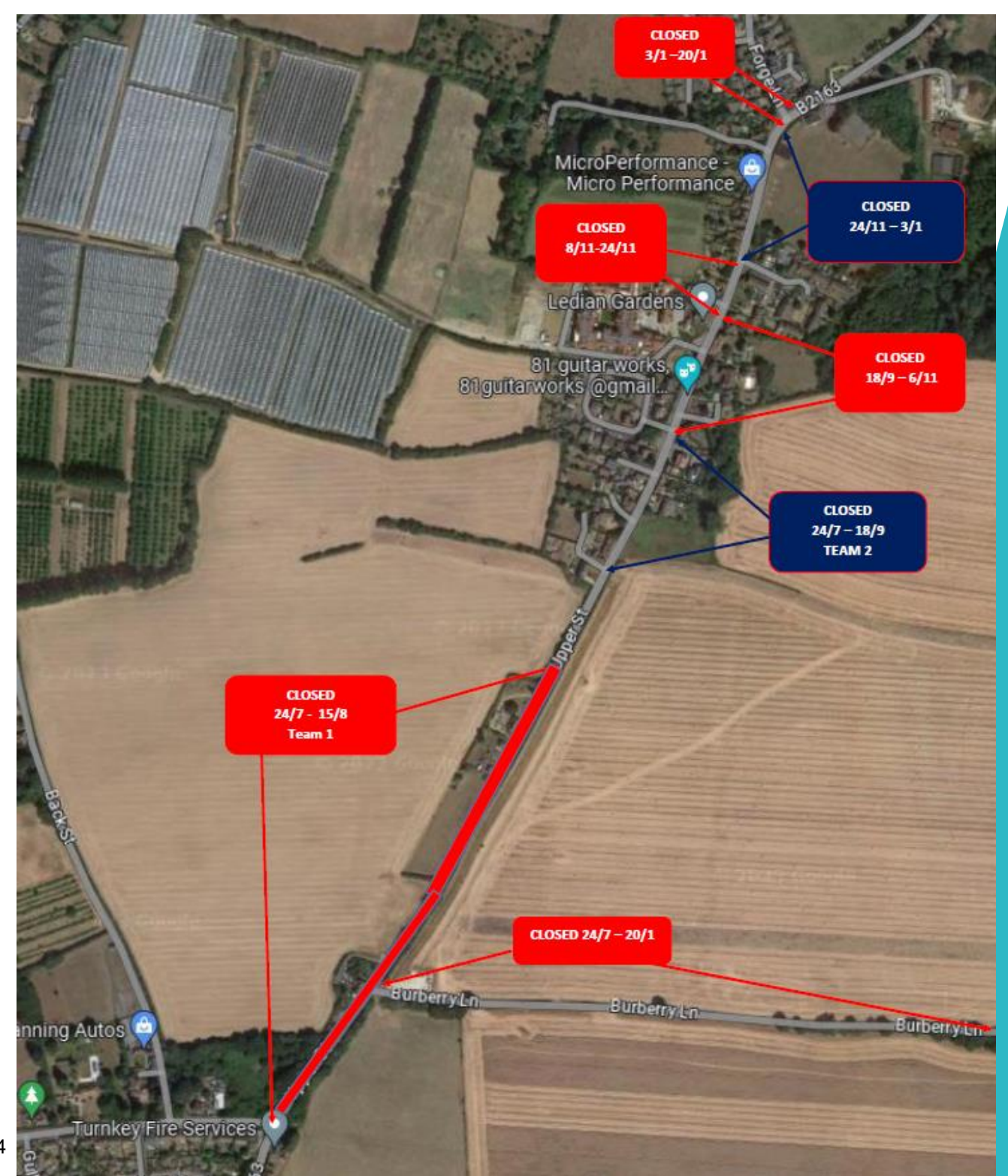
- 535 metres of new main to replace an ageing, burst-prone section in Upper Street.
- The new section of pipe will be larger in diameter to allow for extension to retirement village extension
- Protecting tap water supplies to existing Leeds residents as the community grows.
- A £460,000 investment into the area's water supply infrastructure
- Due to begin on 24 July 2023
- Expected to last six months due to utility congestion.
- Road closure in Upper Street between the junctions with Horseshoes Lane and Forge Lane
- Work will be phased to allow us to maintain access for residents and businesses.



Current programme phases

- 24 July – 15 August
 - From junction with Horseshoes Lane to north of Burberry Lane (services and main abandonment)
- 24 July – 18 September
 - From south of Chapel Cottages to Burgess Hall Drive
- 18 September to 6 November
 - From Burgess Hall Drive to Ledian Gardens
- 8 November to 24 November
 - From Ledian Gardens to Farmers Close
- 24 November to 3 January
 - From Farmers Close to southern side of Forge Lane
- 3 January to 20 January
 - Crossing the junction of Forge Lane and connection in Forge Lane

Through access between the A20 and A274 will not be available throughout the project.



Clarification on working patterns

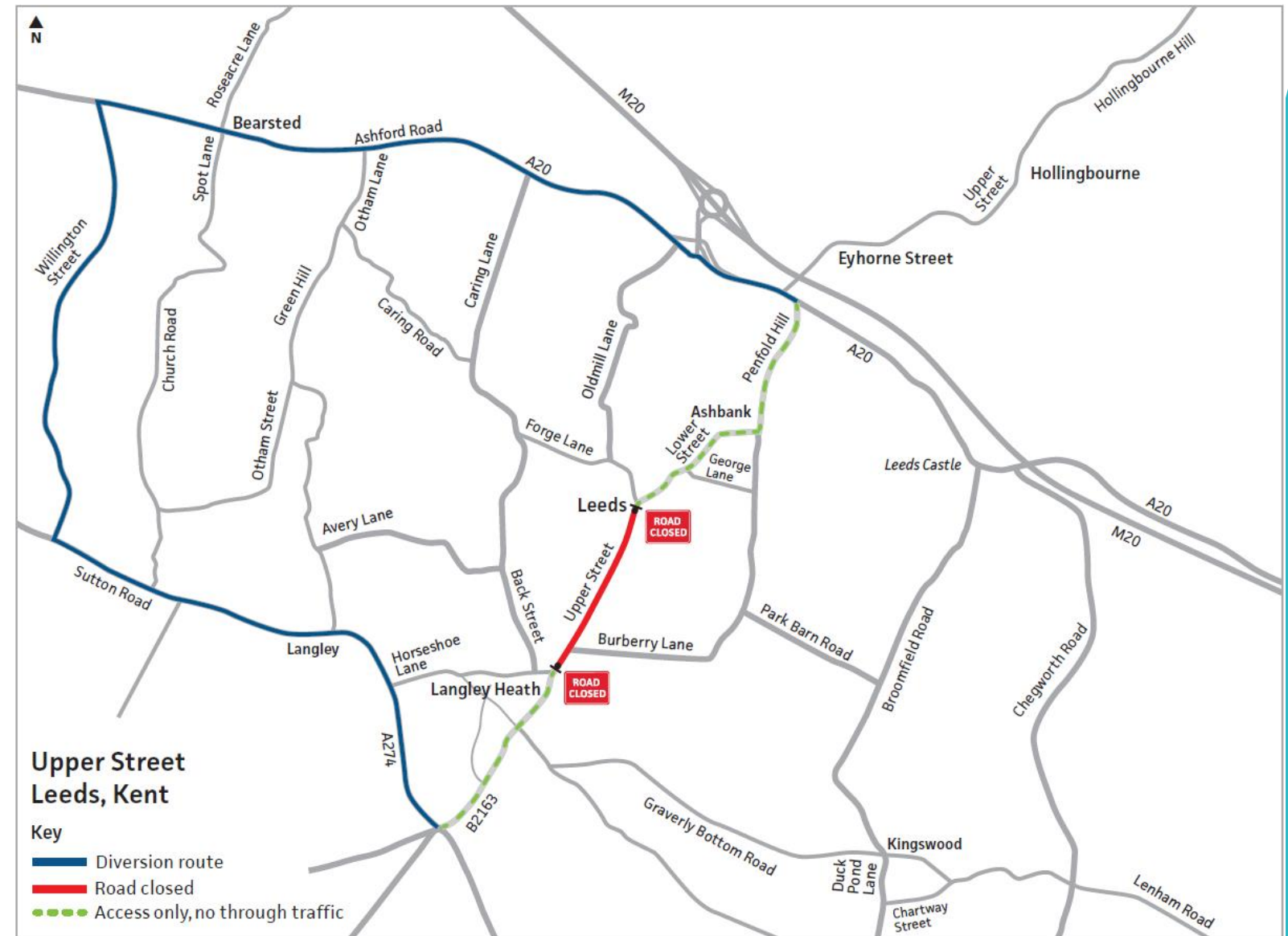
- The programme of six months is based on a standard working pattern of 7:00am to 7.00pm, Monday to Friday
- We will also be working Saturdays where required but not on Sundays to give residents a break from construction noise.



Our team will complete the work as quickly and as safely as possible

Traffic Management and the diversion route

- Our current diversion map raised multiple concerns regarding other routes becoming 'rat-runs' and causing accidents, aggression from motorists and damage to roads and property.
- We have since had multiple discussions with Kent Highways regarding:
 - Chegworth Road and Broomfield Road
 - Additional signage
 - Making certain roads one-way
 - Adding further road closures to make some access only



One-Way Roads

- Although discounted in earlier discussions, KCC and SEW have since reviewed the suggestion for a one-way system.
- Routes were driven and assessed with a one-way system in mind.
- These were reviewed and considered on the grounds of safety:
 - Temporary one-way systems are not picked up by sat-nav software and so is reliant on motorists observing signage
 - Having reviewed several one-way options, these continued to produce dangerous pinch points at junctions, increasing potential for vehicle collisions
 - More and additional signage required – each property and access would require one way directions, further causing potential issues with signs being moved and resulting in collisions.



Further road closures

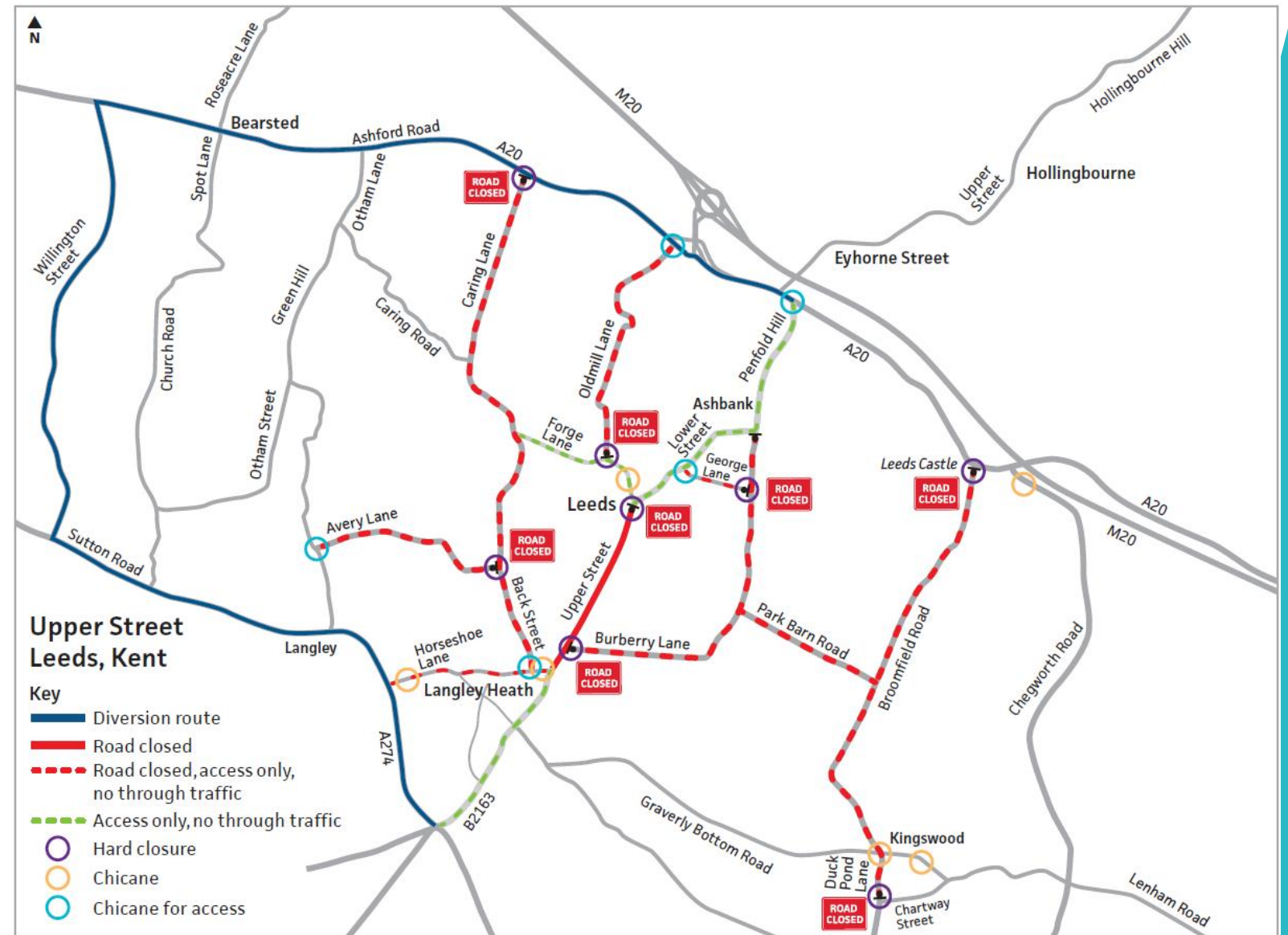
- Our discussions with Highways came to a final proposal to close a number of additional roads:
 - George Lane
 - Old Mill Road
 - Caring Lane
 - Back Street
 - Broomfield Road
 - Burberry Lane
 - Duck Pond Lane

These will have a hard closures at one end, with a chicane to discourage entry at the other. It is proposed that these will be marshalled for the first two weeks and access will be for residents/businesses only. This will create a road closure system that will discourage rat running through these narrow roads.



Further road closures

- Benefits of this solution include:
 - Closures show on sat-navs so will reduce traffic travelling into the area and will push drivers to stay on the main diversion route
 - Safer option and will allow better residential access/egress and free up roads for emergency services
 - Will not increase speeds and will minimise risk of collisions
 - Safer routes for other roads users – equestrians, pedestrians, cyclists
 - Avoids increased traffic on roads and the impact on the condition of these roads.
 - If successful, this approach could be used in other areas as well as this one to minimise disruption.



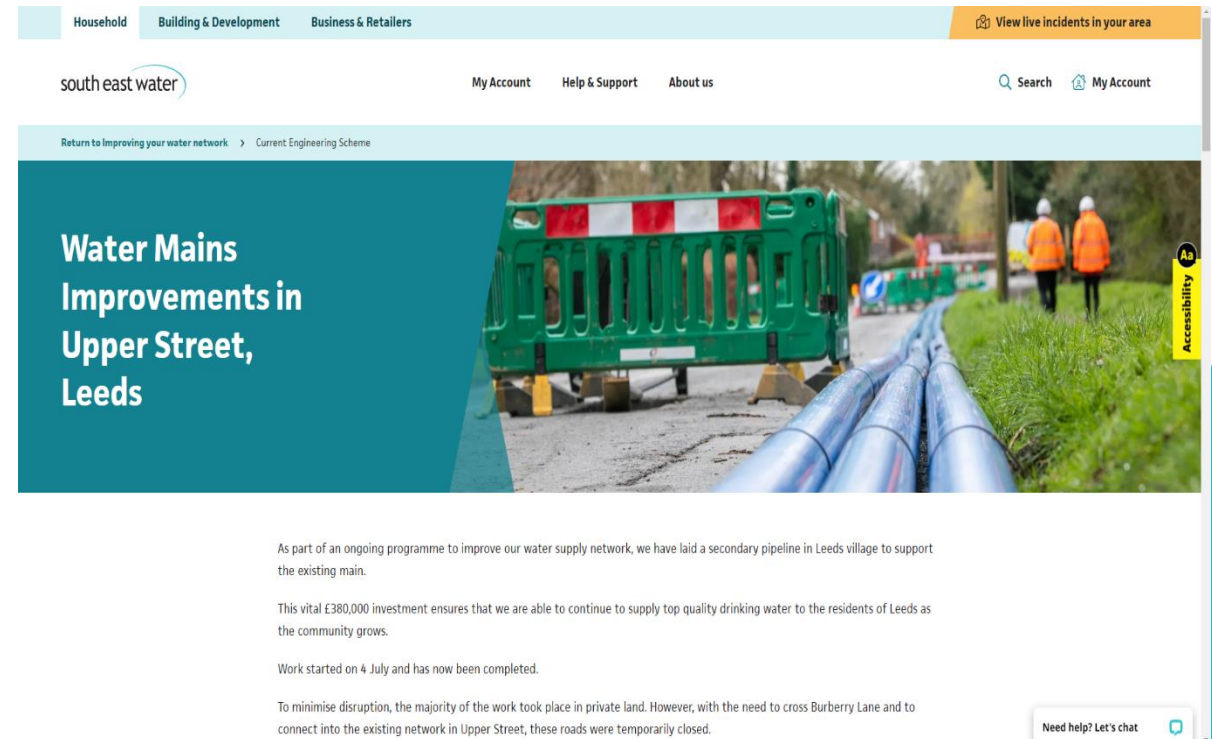
Additional signage

- We will be adding a number of bespoke signs stating roads are not suitable for diverted traffic, no through road, no turning areas, no HGV access.
- Looking into siting of electronic signs in a number of locations with Kent Highways.
- Advanced warnings on the overhead matrix signs on the M20 – being discussed with National Highways
- Advanced warning signs will be put out ahead of work displaying South East Water contact details.
- Signage will monitored on a regular basis, and this will be daily from the beginning of the scheme.
- Spare signs will be available and although we can secure these, there will always be those who will move or steal signs no matter what we do.
- Any issues with moved or displaced signage can be reported via Liz Faulkner to have corrected.



How we'll communicate traffic management changes to the wider community

- Once these changes are confirmed, we'll send out an updated letter to residents of Leeds and surrounding villages
- To reach the wider travelling public, press, social and radio adverts will also advertise the closures before and at the start of the project
- Throughout the scheme, confirmed and agreed updates on traffic management, as well as any general project updates, will be available on our dedicated webpage: southeastwater.co.uk/leeds
- Customers can also receive updates via our interactive map text/email service
- Updates available via social media and parish councils
- Stakeholders will receive regular email updates throughout the project
- Further meetings can be arranged to discuss localised issues



Thank you
The floor is now open
for questions